

Conlon

1961 - 2011

Celebrating 50 Years

Celebrating 50 Years
of Conlon Construction



This book is dedicated to the five Conlon brothers:
Mick (who sadly passed away in 2003), John, Pat, Vincent and Malachy.



Celebrating 50 successful years

It is a very proud occasion for Conlon Construction to be celebrating its 50th year in business. When the five Conlon brothers founded the company in 1961, I doubt they could have imagined back then how it would grow and prosper.

More than nine hundred Conlon projects have been completed across the North West region, Yorkshire and the Midlands, each a testament to the hard work and commitment of our employees. We are fortunate to have benefitted from the input of such dedicated staff over the years, and it is exceptional in our industry that so many have chosen to spend the best part of their careers with Conlon.

This commemorative book has been created to celebrate the people who have been a part of Conlon Construction over the years; the wide range of projects we have delivered; the clients and design consultants we have had the pleasure to work with; and our supply chain contractors; all of whom have contributed to our success along the way.

We have sought to bring our history to life by focussing on a selection of projects, events and anecdotes on a decade-by-decade basis, from the 1960s to the present day. We very much hope you enjoy reading this snapshot of the company's history.

To paraphrase Malachy Conlon's words on the occasion of our 25th Anniversary – "Conlon Construction has developed as a family business over [50] years and we look forward to the next [50] with confidence and enthusiasm."

Theresa Noblett
Executive Chairman

1960s

The sixties were a time of new beginnings – the space race was underway, music went wilder, women's skirts got shorter, men's hair got longer and the Conlon brothers were busy laying the foundations of the UK's motorway network as the M6 took shape. It is here that Conlon Construction has its roots and the firm quickly developed a reputation for reliable and timely work with a strong and loyal customer base beginning to form.

"When working on the construction of the M6, all five brothers were submitting invoices separately which caused a little confusion, especially for the Tarmac accounts department. It may even have been their suggestion to put our invoices all together so they could be dealt with as one company. So, we did, and called ourselves Conlon Bros (Preston) Ltd."

Malachy Conlon

Events in November 1961

Conlon Bros. (Preston) Ltd registered on 24th November 1961
PM Harold Macmillan
Elvis No. 1 Hit, Little Sister
Berlin Wall was built
Launch of E-type Jaguar

Events at the time

1963 – PM Alec Douglas Home
1963 – President Kennedy assassinated
1964 – PM Harold Wilson
1964 – Cassius Clay beats Sonny Liston in Round 1
1966 – England wins the World Cup
1969 – First Man on the moon



Mick Conlon's brand new Bedford 7-Ton Tipper Wagon parked outside the brothers' lodgings at Tang Hall Lane, York (1956)



The five Conlon brothers (L-R): Malachy, John, Vincent, Mick and Pat



An early letterhead.



John Conlon refuelling



The Conlon Bros. fuel tanker during construction of the M6 motorway

“We started doing contracting work because haulage was becoming more competitive and we knew we had to do something else. As three of us were experienced tradesmen we decided to turn our attention to construction and civil engineering projects.”

Pat Conlon



Malachy Conlon with Mr GR Green, manager of National Benzole

“The first service reservoir project we did for Fylde Water Board was at Downham near Clitheroe. At the time we were told a replacement reservoir was needed because of problems on the wedding day of the local land owner’s son. The rumour was that all the tenant farmers’ families had been invited to the wedding so everyone had a bath on the same day. Daily baths not being the norm, the reservoir ran dry so there was no water on the day of the wedding! The replacement we built was so successful that the company was awarded five further Water Board contracts around the North West.”

Vincent Conlon



Eileen Taylor, the first employee of the company

Seymour Road, Fulwood, Preston –
the first Conlon housing development (1965)



"I saw an advert for some land for sale at Seymour Rd, Fulwood, gave the cutting to Malachy and said, 'do you think we can do this?' Malachy went to see the owner, bought the land and we started our first private housing development."

Vincent Conlon


Advertisements for early
private housing developments.

CONLON BROTHERS (PRESTON) LTD.
SCHOOL LANE, BAMBER BRIDGE Telephone: 35268/9.
FOR SALE AT SEYMOUR ROAD, OFF LYTHAM ROAD, PRESTON.

SUPERIOR DETACHED DORMER BUNGALOWS — 3 BEDROOMS AND BOXROOM
Central heating and fully insulated. Built-on garage with up-and-over doors, coal store, concrete paths and drive and many extras which include TV aerial plug, wiring for wall lights and doorbells, etc.
FREEHOLD. NO ROAD CHARGES.
PRICE £3,600.

SUPERIOR SEMI-DETACHED DORMER BUNGALOWS
Three bedrooms and boxroom, central heated and fully insulated, garage space, concrete paths and drive. Many extras, which include, full sink units and TV aerial plug, etc.
FREEHOLD. NO ROAD CHARGES.
PRICE £2,820.

**A HOME TO
BE PROUD OF**
**FREEHOLD
3 and 4 BEDROOM
HOUSES and DORMER
BUNGALOWS £2950—£3750**
LYNDALE AVENUE, WALTON-LE-DALE




* Representatives on site daily during normal working hours.

* Evening by appointment, Sunday 2-4 p.m.

* Fully illustrated brochures available on request.

CONLON BROS. (Preston) LTD., Charnley Fold Lane, Bamber Bridge
TEL. PRESTON 35268



“We decided it was time to invest in some experienced staff when we mistakenly omitted to price for one house on a new, mixed housing development in Adlington – we had to build it for nothing!”

Pat Conlon 1965

“When we interviewed Alec, then a few years later, Warren, and in 1971, Jim, we knew instinctively they were right for us – their presence and enthusiasm - it was ‘the way they stood in the doorway’. We are very grateful for the contribution they made to our success.”

Malachy Conlon



Courtesy of Lancashire Evening Post



“What a pleasure and a privilege it was to work for the Conlon family for nearly thirty years. The work was often challenging but the family support enjoyed, in particular, by me Warren and Jim made it all worthwhile.”

Alec Burford, Director, 27 Years' Service (Retired)



Warren Kelly, Director, 27 Years' Service (Retired)

1970s

The 1970s brought musical changes – glam rock, disco and punk with all their associated fashions. This decade also witnessed the oil crisis, the ‘three day week’, industrial disputes, rampant inflation followed by political change. Whilst the tower block had become ubiquitous across the UK, Conlon was appointed to deliver numerous traditional local authority housing projects. The company also completed its first Design & Build and education projects, including construction of All Hallows RC High School, Preston, in record time. The Conlon team was growing rapidly and settled into the newly-extended offices in Bamber Bridge. Conlon became an established name in the Lancashire business world.

Events at the time

1970 – PM Edward Heath
1971 – Decimal currency introduced
1972 – Preston Guild
1974 – PM Harold Wilson
1974 – Mohammed Ali beats George Foreman ‘The Rumble in the Jungle’
1975 – Fawlty Towers first screened
1976 – PM James Callaghan
1978 – The ‘Winter of Discontent’
1979 – PM Margaret Thatcher

Conlon ‘Firsts’

1st Council Modernisation Project of 100+ houses at Crompton Way for Bolton Borough Council.
1st Design & Build project carried out for Imperial Chemical Company – office and warehouse on School Lane, Bamber Bridge.
1st New Primary School – Rishton Primary School – constructed using the “ONWARD” Design System.
1st Project in the Care Sector - a 52-bed “New Aged Persons Hostel” in Longton. An 18-month contract, completed in 11 months.
1st High School - The new All Hallows Secondary School was completed in 10 months – a record.
1st Industry Awards received – see page 13.



Bolton Fire Station and
Brigade Headquarters (1971)



“The new Bolton Fire Station was a difficult project, mainly because of the bad ground conditions. We even came across a 30’ well which had to be filled with concrete. I particularly remember my relationship with the Structural Engineer – he was a super chap to work with which really helped.”

Pat Conlon



Porter Street Housing for Preston Corporation (1972)

“I started working for Conlon in 1972 at a housing site on Porter Street in Preston, where Bill Courcha was the site agent, Harold Gregson the general foreman and John “The Fox” Kerrigan the ganger man. Tommy O’Halloran drove the JCB and Pat Conlon was the brother in charge. I can remember this job clearly as Preston Guild was taking place and the site was being picketed during the building strike at the same time.”

Michael McLoughlin, Site Manager, 39 Years’ Service



“I remember setting out Bolton Fire Station with an old theodolite with brass wheels and thinking ‘there’s got to be a better way than this!’ The changes in technology and engineering over the years have been marvellous and make the job so much quicker. I do have fond memories of the old tools of the trade though.”

Larry Conlon, Site Manager, 44 Years’ Service (Retired)



Walton Summit Industrial Estate for Central Lancashire Development Corporation (1975/76)

"I remember during the 70s when it was difficult to get hold of materials at short notice, one bricklayer told me he "loved" working for us because we never ran out of materials like other companies did."

Vincent Conlon

Preston Polytechnic Halls of Residence (1976)



"Our first project in the care sector was a 52-bed new 'Aged Persons Hostel' for Lancashire County Council. Originally an 18-month contract, Conlon completed it in 11 months using critical path analysis. The client researched all similar contracts to see how we did it. Our project had used a similar number of labour hours, but was just better planned."

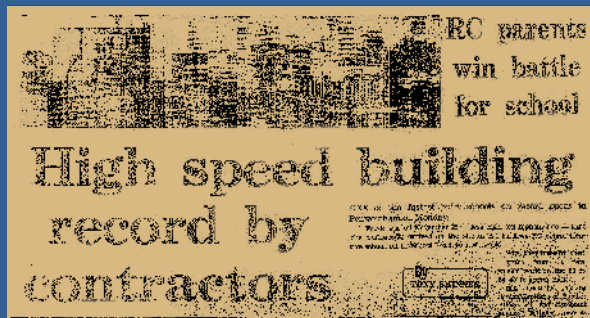
Jim Burrow, Director, 40 Years' Service

“In the late seventies I worked one summer with the buyer, Frank Charnley. This was a period of rampant inflation – every day we had to check on the latest price of materials before placing an order. Often prices went up overnight. Contracts even recognised this fact by operating a price fluctuation mechanism that allowed contractors to claim back any increase in materials prices.”

Michael Conlon

“All Hallows was a 10-month project and a big setback at the outset was the 3-month lead time for the steel! Fortunately, we located some from a cancelled project – the steelwork was re-designed to suit and work progressed. We had 4 gangs of bricklayers working flat out to finish in record time.”

Vincent Conlon



Courtesy of Lancashire Evening Post



All Hallows RC High School, Penwortham, Preston (1975)

Royal Preston Hospital (1975)



"At Royal Preston Hospital Conlon was a principal sub-contractor to CED Building Services, responsible for construction of all the single-storey core buildings, including: brickwork, blockwork, fixing of pre-fabricated wall panel systems, carpentry & joinery."

Michael O'Donnell, Director, 31 Years' Service



"I started out as a joiner and had regular contact with the Conlon brothers who always had time to speak to everyone. In those days the company employed all its own tradesmen from bricklayers to painters. It was great fun with lots of camaraderie that came from a big team who all knew each other."

Grahame Livesey, Site Manager, 33 Years' Service



Pictured above, Ken Wright (left) checking the workmanship of windows for Lanson House, Taylor Patterson's new offices at the Winckley Square Development. Ken (37 Years' Service) managed the Conlon depot prior to retiring in 2009. He was assisted by Keith Procter (far right) who served 38 years with the company.

Awards

Housing Design Awards – 1971 – 81 Dwellings Spendmore Lane, Coppull for Chorley Rural District Council – Architect, Kevin Fletcher.

Civic Trust Award – 1978 – Regional Office for Horsley Smith, Architect, Kevin Fletcher.

Good Design in Housing Awards – 1978 – Jubilee Court West Paddock, Leyland for South Ribble Borough Council – Architect, Kevin Fletcher Smith Partnership.

Tower Lane Housing Development, Fulwood, for Eaves Brook Housing Association (1979)



Moor Lane Day Centre for Lancashire County Council (1977)

“Sub-contractors liked working for us because they got paid on time. Cash flow was easy to manage in those days because we were paid fortnightly on the council housing projects.”

Pat Conlon

1980s

Michael Jackson, Madonna and Duran Duran ruled the pop charts with fashion going from 'New Romantic' to 'Power Dressing'. In the economy, recession, the miners strike and high unemployment were followed by privatisations, an economic boom, 'yuppies' and mobile phones the size of bricks.

Conlon Bros. evolved into Conlon Construction Ltd, with a new generation of the family joining the company. Building projects of the 1980s included many retail and light industrial developments incorporating large steel sheds in their construction, of which Conlon delivered many across the region together with housing and local authority projects.



"Ever since I started as a 16-year old, the team spirit at Conlon has always been strong and everyone is involved in celebrating the company's successes."

*Clare Singleton,
Customer Care Manager,
30 Years' Service*

Events at the time

- 1980 – Seb Coe and Steve Ovett win Gold medals at the Moscow Olympics
- 1982 – Falklands War
- 1982 – The Hacienda nightclub opens in Manchester
- 1984 – Miners' Strike
- 1985 – Live Aid
- 1985 – Chernobyl
- 1986 – Diego Maradona's "Hand of God"
- 1987 – Britain hit by a hurricane
- 1989 – Berlin Wall torn down



*Theresa Noblett,
Executive Chairman,
26 Years' Service*



Meadow Park, Conlon Housing Development, Garstang (1980)



“My fondest memories are of working with the Conlon Brothers. Each had a different personality and they were so hands-on. I remember once on the British Oxygen project in Bamber Bridge Vincent was working alongside us, and he turned on the headlights of his car so we could all see to keep on working.”

Peter Bamford, Site Manager, 34 Years' Service



B & Q Superstore at the Conlon private development, Highfield Estate, Chorley (1980-84)



Lancashire Constabulary Police Headquarters
– Communications Centre (1987)



Blackpool Fire Station (1986)

Civic Trust Awards 1985:

Victoria Day Nursery, Radcliffe, for Bury Metropolitan Borough Council
Rothbury Court, Roland St, for Bolton Metropolitan Borough Council



"In the mid-1980s the company bought its first computer for use by Contracts Managers. The software was called 'Pertmaster' and it ran on the CP/M platform, - a forerunner of MS-DOS. The 12" monitor was a green-screened affair and the computer's total memory was a mammoth 128Kb!"

*Michael Cornes, Contracts Manager,
38 Years' Service (Retired)*



*Michael Conlon,
Director,
24 Years' Service*



Refurbishment of 132 dwellings – Thirlmere Road, Preston, for Preston Borough Council (1985-87)
Theresa's first project as a site-based Quantity Surveyor

Blackpool Indoor Bowls Centre, for Blackpool Council (1988)



Interior of Blackpool Indoor Bowls Centre



“The indoor bowls centre was technically challenging, including the largest spanning castellated steel beams in the country at the time. Due to the large span of the building and its coastal location the steelwork on the gable ends had to be hinged to cope with the wind. We even had to erect temporary columns to hold the roof in place until it was complete. I couldn’t believe it when the specialist team arrived to lay the concrete slab – they looked like the ‘Beverly Hillbillies’. However, they did an excellent job and the 1,000m² floor was laid within a tolerance of +/- 1.5mm”.

Larry Conlon, Site Manager



Earby County Primary School for
Lancashire County Council (1988)



25th Anniversary Dinner, The Pines Hotel, Chorley (1986)
 Back Row: Malachy Conlon, Alec Burford, Vincent Conlon, Jim Burrow
 Front Row: John Conlon, Warren Kelly, Pat Conlon, Mick Conlon



Legal and Trade offices

Redevelopment of the former Catholic College, Winckley Square, Preston (1988-91)

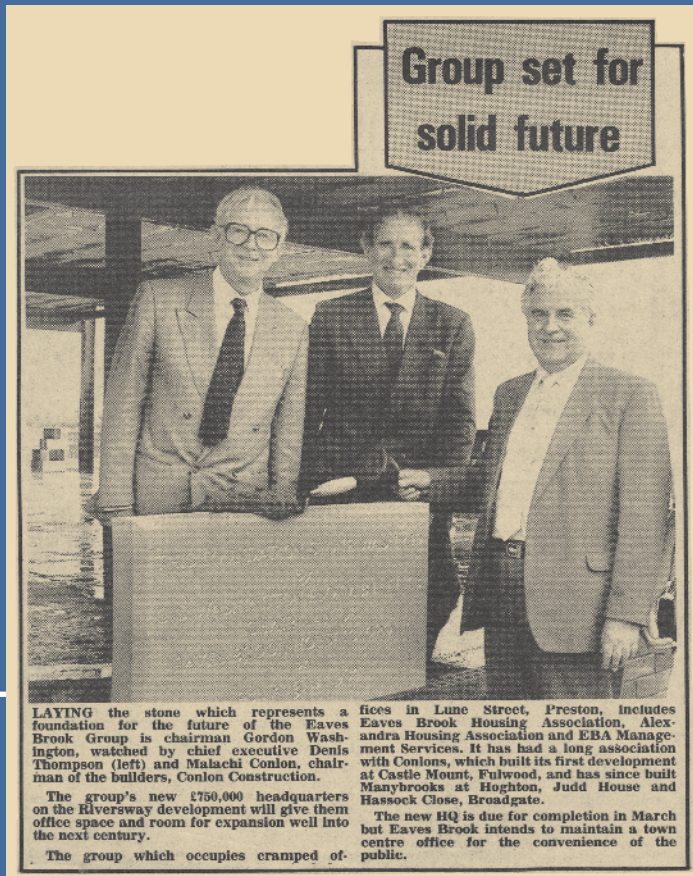


Norwich Union offices



"I arrived at Conlon after working for a large organisation. Right from the start I was struck by the friendly atmosphere generated by colleagues in general and the Family in particular. Conlon's success is founded very much on its people."

Alan Cragg, Director, 24 Years' Service



Eaves Brook House, Riversway, Preston (1990)



Martin Conlon,
Site Manager,
23 Years' Service



The Snack Factory, Skelmersdale (1989)
100,000 ft² snack food production plant for
Quintin Foods, now operated by Walkers Crisps

1990s

The early nineties saw another economic recession, high bank interest rates and 'Black Wednesday'. Grunge and Britpop appeared on the music scene whilst football's Premier League 'kicked off'. As the UK economy recovered, confidence in new building projects grew and Conlon continued to win prestigious work. Changes at board level during this time saw several retirements and new directors including second generation family members.

Toward the end of the decade politics saw the emergence of 'New' Labour and a change of government. The 1990s were a proud time for Conlon, as the firm was appointed to deliver work on numerous prominent projects and undertook several of its own large private developments.

Events at the time

- 1990 – PM John Major
- 1992 – Preston Guild
- 1992 – Betty Boothroyd – 1st Female Speaker of the House of Commons
- 1996 – Euro 96 in England
- 1997 – PM Tony Blair

Old Bridge Way Housing Scheme, Chorley,
for North British Housing Association (1993)



“The Corn Exchange (or the Public Hall as it was known) had many memories for me as I went to dances there as a young man, so I kept one of the floor springs as a souvenir.”

Larry Conlon, Site Manager



“When we worked on the Corn Exchange in the centre of Preston, we had to dismantle and repair the decorative cupola and clock tower. This was transported and the work was done at our joiners’ shop. When it came to re-erecting the weather vane, I can remember standing up there with a compass to make sure north was pointing in the right direction.”

Grahame Livesey



The Corn Exchange, Preston, for Lancashire County Enterprises Ltd (1993)



Preston Guild Trades Procession (1992)
Courtesy of Harris Museum & Art Gallery



“The capsule, dating back to July 1934 was found underneath a foundation stone at the maternity block at the Preston Royal Infirmary almost 60 years to the day since it was laid.”

Excerpt from the Lancashire Evening Post article dated 22 July 1994.





Alexandra Pavilions, part of the redevelopment of the former Preston Royal Infirmary site (1994-98). The development, named "Deepdale Pavilions", included 70 houses and 45 flats for Eaves Brook Housing Association, together with retail outlets for Kwik-Save, Ladbroke's and Pizza Hut.

"We bought the old Preston Royal Infirmary from the NW Health Authority in 1991 as a development site. Security became a great problem, but when the police asked if they could use the old buildings as a training area for their dog handlers and SWAT teams, we were delighted to find a solution!"

Malachy Conlon



Royal Brook House at Deepdale Pavilions under construction (left) and completed (1997)





Royal Preston Hospital Radiotherapy Centre (1995/96)



Retirement of directors Warren Kelly (seated second left) and Vincent Conlon (with his granddaughter, Grace) and office staff (1995).



Theresa Noblett showing HRH The Duke of Gloucester details of the Deepdale Pavilions project. Earlier the same day the Duke opened another Conlon project - the new Radiotherapy Centre, Royal Preston Hospital.

5th June 1997

Awards

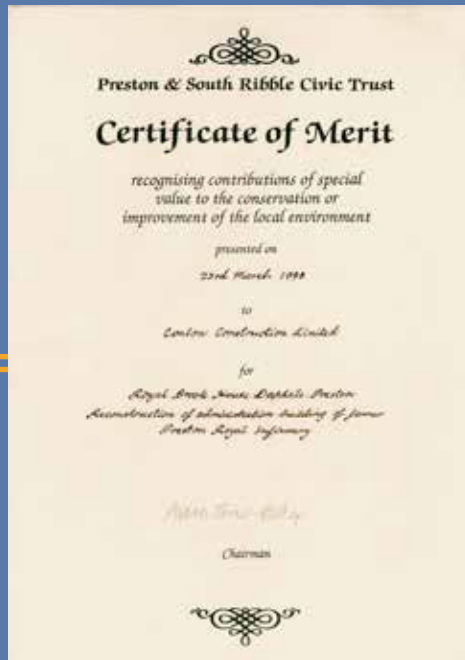
4 Civic Trust Awards

1993 – The Corn Exchange, Preston

1995 – Coppull CP School, Chorley

1995 – Old Bridge Way, Chorley

1998 – Royal Brook House, Deepdale Pavilions Development



Blackburn Job Centre, Cardwell Place, for the Employment Service (1996)



“There are lots of buildings I’ve worked on that I don’t have a reason to visit, so it’s nice to be able to have a pizza on Winckley Street in Preston every so often as I worked on the refurbishment of the Grade II listed buildings there.”

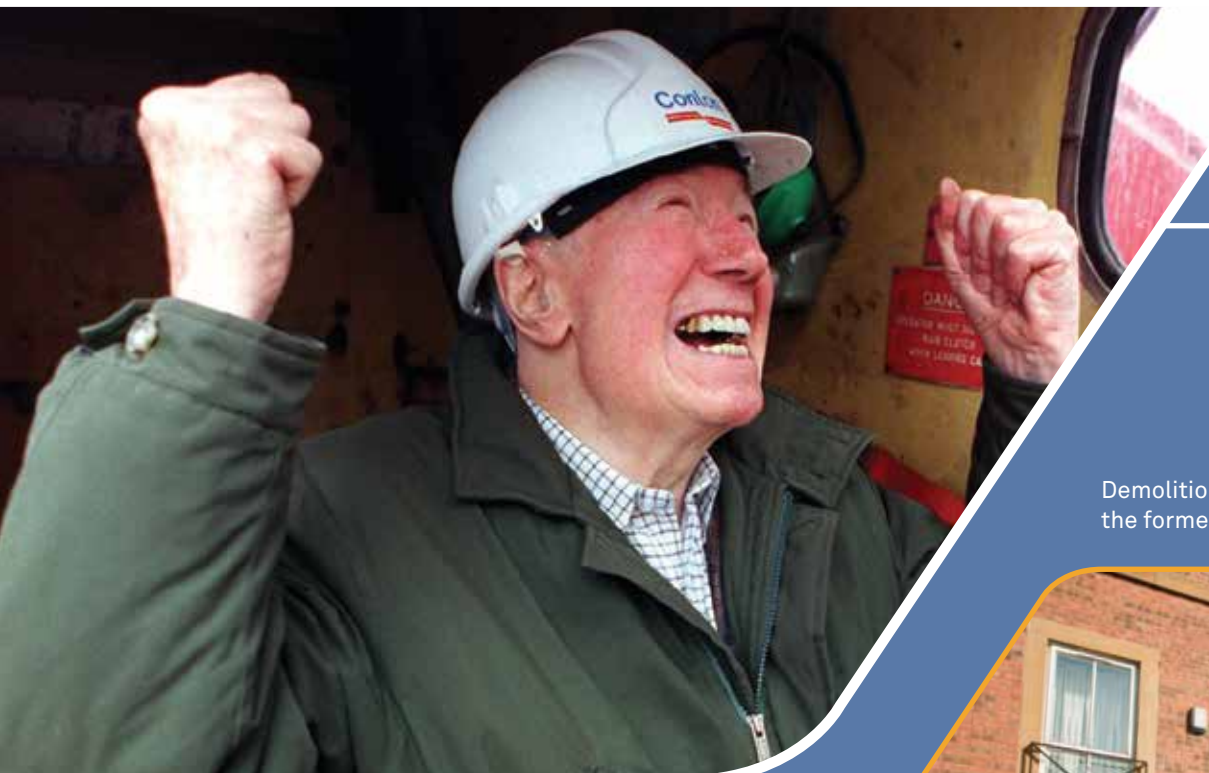
Grahame Livesey, Site Manager



The Learning Resource Centre
at Myerscough College (1998)



Malachy Conlon (Chairman) retires.
Theresa Noblett becomes the
company's second Chairman (1997).



Demolition begins at the former Sorting Office

“Early on at the West Cliff project we were approached by Sir George Grenfell-Baines, co-founder of BDP, who lived across the road. Having objected to the original Sorting Office in 1959 he then suffered almost forty years of 24-hour Post Office traffic. As we were about to demolish the building to make way for the housing development, I asked Sir George if he would like to sit in the machine that swung the first wrecking ball. Needless to say he was delighted to oblige”.

Michael Conlon



Park View Mansions, West Cliff, Preston, for North British Housing Association (1999)



Courtesy of Lancashire Evening Post



Torotrak factory and offices, Moss Side Development Park, Leyland (1998)

2000s

The new century saw Conlon embrace a number of changes including IT-based management systems accessible from all sites, training and development programmes, sustainability initiatives and most importantly the ethos of partnering.

The company continued to be successful in delivering a range of projects across the spectrum of construction, with educational work in particular coming to the fore in this period.

Conlon has been awarded several industry accolades, including at national level and is committed to being a good neighbour through the support of community based good causes throughout the region and especially in the vicinity of its projects.



First Partnered Contract – M4ⁱ Demonstration
Project No. 274 – New CDT Block, Rhyddings High School,
Oswaldtwistle for Lancashire County Council (2002)

Events at the time

- 2000 – Sydney Olympics – Steve Redgrave wins 5th Gold Medal
- 2001 – 9/11 attacks in USA
- 2002 – The Euro currency commences in 12 countries
- 2003 – England wins Rugby World Cup in Australia
- 2004 – Facebook launches
- 2007 – PM Gordon Brown
- 2008 – Lewis Hamilton becomes the youngest ever Formula 1 champion
- 2009 – President Obama inaugurated
- 2009 – England wins the Ashes
- 2010 – PM David Cameron



“The best day of my working life at Conlon so far was in London on 13th November 2008, when we picked up two national awards in one day.”

*Maureen Boland, Director, 11 Years' Service.
Appointed to the Board in 2000*

Current Board: Michael Conlon, Maureen Boland, Theresa Noblett, Alan Cragg, Michael O'Donnell and Jim Burrow



- 2002 – Appointed Framework Partner to Lancashire County Council
- 2005 – Appointed Framework Partner to Cheshire County Council
- 2007 – Conlon Holdings established to form a group structure
- 2008 – Re-appointed Framework Partner to Lancashire County Council
- 2009 – Appointed Framework Partner to Blackpool and St Helens Councils, The Northern Diocese and Salford University

Blackburn Enterprise Centre for Blackburn with Darwen Council (2007)



Chairman Theresa Noblett with Lancashire County Council Leader Hazel Harding and Chairman Dorothy Westell laying the date stone with pupils from Rhyddings High School



TNT New Distribution Hub, Leyland – TNT's biggest in the UK (2006)



Establishment of the Operations Board:
Guy Parker, Michael Conlon,
Andrew Makinson, Michael O'Donnell
and Darren Lee (2005)



Pinstone Chambers, Sheffield City Centre (2004)
A Conlon development to convert the listed former
Salvation Army offices into 17 'City Living' apartments



Helmschore Mills Textile Museum, Rossendale, during refurbishment and inside the finished museum (2008). During the work on this scheduled monument a mummified cat was discovered – a magic charm to protect the mill from witchcraft.



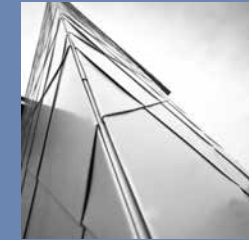
Interior of The Grand



The Grand, Clitheroe (2008)
The refurbishment of the listed Grand Theatre, Clitheroe on behalf of The Lancaster Foundation. The building was renovated to provide performance facilities together with conference spaces and a suite of BBC standard recording studios.



Bank of New York, Manchester (2007). Interior fit out works to three floors at Number One, Piccadilly Gardens



Newbridge School, Platt Bridge, for Wigan Council (2008)

Awards

- 2000 – Civic Trust Award – Park View Mansions, West Cliff, Preston
- 2002 – Civic Trust Award – Re-development of Winckley St, Preston
- 2008 – 2 x NW Regional Awards – Constructing Excellence SME Contractor of the Year & FMB Workforce Development and Training
- 2008 – 2 x National Awards – Constructing Excellence SME Contractor of the Year & FMB Workforce Development and Training
- 2009 – NW Regional Award – Constructing Excellence - Skills & Education
- 2009 – National Award – Constructing Excellence – Leadership & People Development
- 2009 – LABC 'Built in Quality' Award – St Elphins CE Primary School, Warrington
- 2010 – National Considerate Constructors Bronze Award – Holy Angels School, Kirkby



Business Improvement Day for site-based workers, held at the National Football Museum in Preston. Pictured, bricklayer Gordon Marshall with the 2008 Constructing Excellence Award for SME Contractor of the Year. Other 2008 property awards held by joiners Glynn Rostron and Martyn Lancaster.

The Yan, Grizedale Forest, Cumbria (2008)
Extension and alteration of existing stone buildings to form a new education facility for the Forestry Commission. The building made use of traditional building materials combined with a contemporary design for the new extension. Timber components of different woods were dominant in the structure and finishes of the building.



Sustainability was at the fore in the finished design which incorporated a main roof of cedar shingles and a sedum flat roof. Heating was provided by a central wood pellet burning boiler. All joinery components including 9m span inverted trusses, feature windows and oak doors all manufactured, assembled and fixed by Conlon.



Moor Heights (2009)

A five-storey structure comprising 24 apartments for White Cube Developments. The construction incorporated piling, retaining walls and a cladded, steel frame, all built within a constricted site adjacent to a busy road in Preston.

Weld House, Stonyhurst College (2009)

A new 40-bedroom, sixth form dormitory block including two flats and a three bedroom master's house. Built adjacent to the Grade I listed façade of this historic school, Weld House was constructed of local sandstone and Burlington slate sympathetic to the surrounding buildings.



Image courtesy of Cassidy + Ashton Architects



A design and build, partnered project for Lancaster City Council to create a centre for creative industries; refurbishment of the Storey Gallery; a new tourist information centre; formation of a new auditorium; conference facilities and meeting rooms together with a community café and bar.



“We attended the pre-contract meeting for a new community centre in Croston. As we all introduced ourselves it came to the turn of the Conlon Team: Site Manager - Michael McLoughlin, QS - Michael Chaplin, CM - Michael Cornes and me, QS Director Michael O'Donnell. The client was starting to smile about all the 'Michaels' when who should burst in at the last minute but Contracts Director, Michael Conlon! Well said the Client, laughing, is there anyone at Conlon not called Michael? The moral of the story is, if you want to make a name for yourself at Conlon, change it to Michael.”

Michael O'Donnell



Storey Institute, Creative Industries Centre for Lancaster City Council (2009)



Faith Primary School, Everton (2010)
A new single form entry dual-faith primary school in a deprived area of Liverpool where Conlon became involved in the local community. The company received; a national Considerate Constructors bronze award, the Constructing Excellence 'Local Economic Impact Award', and site manager Gordon Mackenzie was short-listed by the Chartered Institute of Building for Construction Manager of the Year Award.



Sister Moira Meeghan receives the keys to the new school.



North West Regional Construction Awards (2011)



“I was extremely impressed with the professionalism and dedication of the construction team, who brought Derian Lodge in on programme, despite problems of severe weather conditions and last minute design changes.”

Stephen Hetherington, IWA Architects



Derian Lodge, Derian House
Children's Hospice, Chorley (2010)

Trinity Primary School,
Buckshaw Village, Chorley (2010)



Lakeland Motor Museum (2010)

The relocation of Lakeland Motor Museum to provide better display opportunities, much improved exhibit interpretation and to facilitate the introduction of aspects of road transport history not previously represented. The new museum with associated exhibition buildings, restaurant, car parking and garden centre is built on the River Leven making use of the Grade II Listed, former 'Dolly Blue', carton packaging sheds.



2011

Conlon Construction is venturing into a sixth decade with all the enthusiasm, enterprise and determination associated with its first 50 years. With the experience of our people and the goodwill we have nurtured amongst clients and construction professionals to date, we look forward to the future with confidence and with good reason to be excited about our future.



Image courtesy of Blackpool Council, Capital Projects & Regeneration



Myplace Southpoint, Blackpool, for Blackpool Council (still under construction). A new youth centre on three floors housing a café with external plaza together with space for activities and offices for youth services. The building is primarily concrete-framed, wrapped in a composite cladding system.



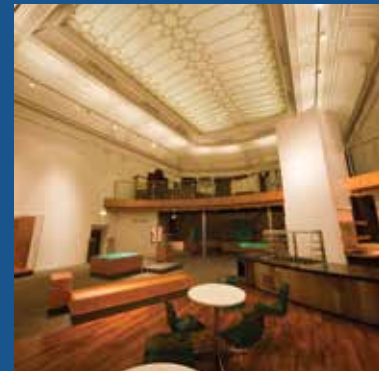
The Grand Vestibule of The Winter Gardens, Blackpool for Blackpool Council.
The works to this Grade II Listed building include refurbishment of: existing doors and screens, the ticket office and entrance lobby, together with relocation of the lift lobby and major terrazzo floor repairs.



Conlon Operations Board Director, Guy Parker, with the Myplace youth group who were involved in the design of the centre.



The Museum of Lancashire, Preston, for Lancashire County Council, housed in the Grade II listed former Preston Quarter Sessions House. Works included: a new entrance; areas focussing on Lancashire entertainers; industry; Lancashire at war; and law and order.



Interior of the museum



Holcombe Moor Training Camp for the North West Reserve Forces and Cadets Association. A weekend training centre for young army cadets across Greater Manchester comprising: two accommodation blocks with 202 beds and the county headquarters of the Army Cadet Force (ACF) and its staff.



Netherton Activity Centre for Sefton Council (right: interior). The Centre includes a sports hall, library, community rooms, IT suite and a specialist play facility called Jake's Sensory World, for children with profound mental or learning difficulties.





Conlon employees November 2011



London 2009 – Constructing Excellence ‘National Award for Leadership and People Development’



Conlon employees November 2011



Conlon wins two national awards in one day – London 13th November 2008



2008 Office staff with the Construction Excellence 'North West SME of the Year' award



Conlon employees November 2011



Julia Evans Chief Executive of the NFB presenting the 2011 National Bronze Considerate Constructors Award to: The Faith School project team.
(L-R) Phil Ashall, Gordon MacKenzie, John Blow.



Conlon employees November 2011



Buggy Riding – November 2005
Andy Chilton & Sandra Hodson



Ivor Goodsite, Guy Parker and Clare Singleton at Davenhill Primary School - November 2011



2010 - Directors Michael and Maureen with Sr Moira Meeghan and pupils from Faith school, pictured with their new mini-bus - purchased with Conlon's support



It's a Knockout – November 2010
Simon Brown and Lee Parry



Alby King and Maureen Boland



It's a Knockout – October 2010



Buggy riding – November 2005



It's a Knockout – November 2010
Fiona, Elaine, Kath, Clare, Andrea, Mark



A very muddy Gordon MacKenzie



Fylde Rugby Club Under 11s Team – The Pumas - sponsored by Conlon in 2011

FEATURED PROJECTS AND DESIGN CONSULTANTS

Page

- 6 Seymour Road, Fulwood - Conlon Private Housing Development (1965) – Arch.: Lilly & Kirkham
- 8 Bolton Fire Station and Brigade Headquarters (1971) – Arch. and QS: Bolton Borough Council
- 9 Porter Street Housing (1972) – Arch.: Sellick Nicholls Williams, Cornwall; QS: Preston Borough Council
- 10 Walton Summit Industrial Estate (1975/76) – Arch.: Robert Matthew Johnson Marshall & Ptnrs.
- 10 Preston Polytechnic Halls of Residence (1976) – Arch.: Bramley & Pate
- 11 All Hallows RC High School, Penwortham (1975) – Arch.: Cassidy + Ashton; QS: Vandome Jones & Ptnrs.;
Struc. Eng.: Durkin, Moran & Reynard; M&E: Norman Blezard & Ptnrs.
- 12 Royal Preston Hospital (1975) – Arch.: Charles B. Pearson Son & Ptnrs.; M&E Eng.: DSSR
- 13 Tower Lane Housing Development (1979) – Arch.: Cassidy + Ashton; QS: Thornber & Walker; Struc. Eng.: Sleater & Watson
- 13 Moor Lane Day Centre (1977) – Arch. and QS: Lancashire County Council
- 14 Meadow Park - Conlon Housing Development (1980) – Arch.: Derby Fazackerley Wood & Ryan
- 15 B & Q Superstore – Conlon Highfield Industrial Estate Development (1984) – Arch.: William Leaver, Wigan; Struc. Eng.: Sleater & Watson ¹
- 15 Lancashire Constabulary Police Headquarters Communications Centre – All design disciplines by BDP : QS Lancashire County Council
- 16 Blackpool Fire Station (1986) – Arch. and QS: Lancashire County Council
- 16 Housing at Thirlmere Road, Preston (1987) – Arch. and QS: Preston Borough Council
- 17 Earby County Primary School (1988) – Arch.: Lancashire County Council ¹
- 17 Blackpool Indoor Bowls Centre (1988) – Arch.: Building Design Partnership ¹
- 18 Winckley Square Development - Conlon Development (1988-1991) – Arch.: Cassidy + Ashton; Struc. Eng.: Sleater & Watson
- 19 Eaves Brook House, Riversway, Preston (1990) – Arch.: William Leaver, Wigan; QS: Thornber & Walker; Struc. Eng.: Sleater & Watson
- 19 The Snack Factory, Skelmersdale (1989) – Arch.: Michael Ellard Design; QS: John Boon & Ptnrs.; Struc. Eng.: Rigby & Ptnrs. ¹
- 20 Old Bridge Way Housing Development, Chorley (1993) – Arch.: Fletcher Smith Assoc.; QS: Henry Cooper; Struc. Eng.: Cooper, Beal & Ross
- 21 The Corn Exchange, Preston (1993) – Arch.: Ansell & Bailey; QS: AYH Seward; Struc. Eng.: Connell Mott MacDonald ¹
- 22 Edge Hill College Student Accommodation (1994) – Arch.: Cassidy + Ashton; QS: Tweeds; Struc. Eng.: Sleater & Watson; M&E Eng.: J C Bell & Ptnrs. ¹
- 23 Deepdale Pavilions (1994-98) – Arch. Cassidy + Ashton; QS: Thornber & Walker; Struc. Eng.: Sleater & Watson;
- 24 Royal Preston Hospital Radiotherapy Centre (1996) – Arch.: J & J Bolchover; Struc. Eng.: Alan Johnston Partnership; M&E Eng.: Norman Blezard & Ptnrs.

Page

- 25 Blackburn Job Centre, Cardwell Place (1995) – Arch.: Halliday Meecham; QS: Appleyard & Trew; Struc. Eng.: Wright Mottershaw; M&E Eng.: IBSEL
- 26 Conlon Winckley Street Development (1998) – Arch.: Wood Assoc.; Struc. Eng.: Sleater & Watson; (Pizza Express fit out) Imre Burjan Assoc.
- 27 The Learning Resources Centre at Myerscough College (1998) – Arch.: Cassidy + Ashton; QS: Thornber & Walker; Struc. Eng.: Sleater & Watson
- 28 Housing at West Cliff, Preston (1999) – Arch.: Wood Assoc.; QS: McBains Cooper; Struc. Eng.: Sleater & Watson
- 29 Torotrak Factory and Offices, Moss Side Development Park, Leyland (1998) – Arch.: Cassidy + Ashton; QS: Frank Whittle Partnership; Struc. Eng.: Graham Schofield Assoc.
- 30 New CDT Block at Rhyddings High School, Oswaldtwistle (2002) – Arch., QS and Struc. Eng.: Lancashire County Council
- 31 Blackburn Enterprise Centre (2007) – Arch.: Campbell Driver Partnership; QS: Harry Place & Ptnrs.; Struc. Eng.: Clancy Consulting
- 32 TNT Distribution Hub, Leyland (2006) – Arch.: Cassidy + Ashton; QS: Walker Cotter; Struc. Eng.: Graham Schofield; M&E Eng.: Pettit Singleton
- 33 Helmshore Mills Textile Museum (2008) – Arch.: QS and Struc. Eng.: Lancashire County Council; M&E Eng.: James Mercer Group/Chris Bowker
- 33 The Grand, Clitheroe (2008) – Arch.: Ashworth Burke Partnership; QS: Harry Place & Ptnrs.; Struc. Eng.: HIM Assoc.; M&E Eng.: Walmsley Assoc. ²
- 33 Bank of New York, Manchester (2007) – Interior Design: Idea, QS: Burke Hunter Adams; Struc. Eng.: Hilson Moran
- 34 Newbridge School, Platt Bridge, Wigan (2008) – Arch.: QS and Struc. Eng.: NPS Northwest ²
- 35 The Yan, Grizedale Forest, Cumbria (2008) – Arch.: Sutherland Hussey; QS: Johnstons; Struc. Eng.: Burgess Roughton; M&E Eng.: David Eley Assoc.
- 36 Moor Heights Apartments, Preston (2009) – Arch.: Fletcher Smith; QS: David Humphries Assoc.; Struc. Eng.: Booth King; M&E Eng.: Pettit Singleton Assoc.
- 36 Weld House, Stonyhurst College (2009) – Arch.: Cassidy + Ashton, QS: Thornber & Walker; Struc. Eng.: Sleater & Watson; M&E Eng.: JRB Environmental
- 37 Storey Institute Creative Industries Centre (2009) – Arch.: Mason Gillibrand; QS: James & Hague; Struc. Eng.: Buro Happold
- 38 Faith Primary School, Everton (2010) – Arch.: Cunliffes; Struc. Eng.: Alan Johnston Partnership; M&E Eng.: Davies Partnership ²
- 39 Derian Lodge, Derian House Children's Hospice, Chorley (2010) – Arch.: IWA Archs.; QS: Saunders; Struc. Eng.: Reid Jones Partnership; M&E Eng.: Walmsley Assoc ²
- 39 Trinity Primary School, Buckshaw Village, Chorley (2010) for the Diocese of Blackburn – Arch.: Cassidy + Ashton, QS: EC Harris; Struc. Eng.: Sleater & Watson; M&E RPS Gregory ²
- 40 My Place, Blackpool – Arch.; QS; Struc. Eng.; M&E Eng.: All Blackpool Council
- 41 The Winter Gardens, Blackpool – Designer: Donald Insall Assoc.; Struc. Eng.: Gilbraith Partnership; M & E Eng.: Scott Wilson ²
- 42 The Museum of Lancashire, Preston (2011) – Arch.; QS.; Struc. Eng.; M&E Eng.: All Lancashire County Council ²
- 43 Netherton Activity Centre – Arch.; Struc. Eng.; M&E Eng.: Urban Vision Partnership Ltd
- 43 Holcombe Moor Training Camp – Arch.: Stephens Cox Assoc.; QS: The Graves Partnership; Struc. Eng.: Smith Assoc.; M&E Eng.: E S Consulting ²

Photographs by: ¹ Photo-Genics - www.photo-genics.com ² Severnsjones Photography – www.severnsjones.co.uk

The company is delighted to have reached such a significant milestone and the directors would like to express their sincere thanks to all clients and consultants who have entrusted their work to Conlon Construction over the years. We should also like to take this opportunity to recognise the significant contribution made to our projects by all our supply chain contractors, suppliers and loyal staff, whose dedication and professionalism continue to support our aim to provide excellent service.

In addition to those individuals featured within this book, we should like to make special mention of the following employees who dedicated 20 years' service, or more, to the company.

Gerry Bamford, Maintenance Manager
Mick Burns, General Operative
Jimmy Carten, Bricklayer
Frank Carthy, General Operative
Andy Cooper, Bench Joiner
Geoff Corbishley, Plant Manager
Tommy Cottam, Joiner and Site Supervisor
Bill Courcha, Site Manager
Dave Cross, Site Joiner
Jimmy Fisher, General Operative
Harold Gregson, Site Manager
Dougie Harrison, Site Manager
Sandra Hodson, Accounts Administrator
John Kerrigan, Ganger man
Mick Kiernan, General Operative



Alby King, Joiner and Site Supervisor
Carson Makepeace, Hod Carrier
Marlene Mather, Payroll Administrator
Steven McVittie, Estimator
Bert Moss, Wagon Driver
Stewart Moyes, Site Manager
Ray Newton, Bricklayer
Joe Pyle, Site Manager
Ken Robertson, Site Manager
Richard Sephton, Wagon Driver
Margaret Siddle, Senior Accounts Administrator
Bill Tolen, Site Supervisor
David Ward, Contracts Manager
Paul Wigglesworth, Wood Machinist
Nigel Wright, Bench Joiner

This commemorative book has been compiled by Maureen Boland and Michael Conlon. We wish to thank all the staff, current and retired, who provided material for its production. In addition we would like to thank the organisations who also provided invaluable information and assistance, in particular: All Hallows RC High School; Blackpool Council; Sean Conboy; The Harris Museum & Art Gallery; Lancashire Evening Post; Dave Severns Jones and finally, The Write Angle and Wash Design for their advice and support throughout.

